



COMPANY
MANAGEMENT SYSTEM
CERTIFIED BY DNV GL
= ISO 9001 =
= ISO 14001 =



MID R160 MI-001

Single-jet water meter
with protected rollers

ALFA LECO

ALFA LFC

Single-jet water meter with protected rollers

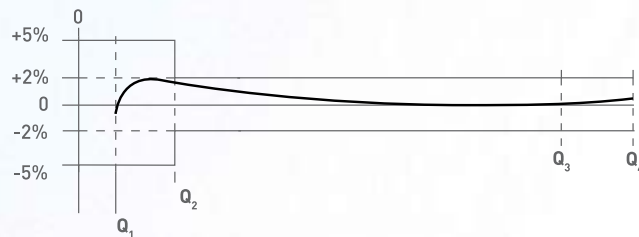
PERFORMANCE ACCORDING TO MID 2014/32/UE DIRECTIVE * AS AMENDED

SIZE		PERMANENT FLOW Q_3 (m ³ /h)	MAXIMUM FLOW Q_4 (m ³ /h)	TRANSITIONAL FLOW Q_2 (L/h)	MINIMUM FLOW Q_1 (L/h)	WORKING PRESSURE (bar)	MINIMUM READING (L)	MAXIMUM READING (m ³)	TEMPERATURE CLASS
(mm)	(inch)								
13/15	1/2"	2,5	3,125	25,0	15,6	16	0,05	99.999	T30/T50
20	3/4"	4,0	5,000	40,0	25,0	16	0,05	99.999	T30/T50
25	1"	6,3	7,875	63,0	39,4	16	0,05	99.999	T30/T50
30	1 1/4"	10,0	12,500	100,0	62,5	16	0,05	99.999	T30/T50

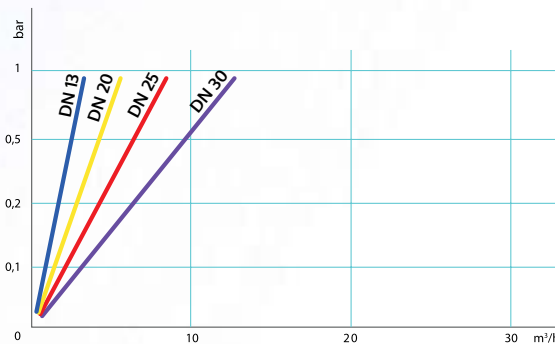
* It replaces the MID 2004/22/CE Directive.

Metrological class MID (Q_3/Q_1) R = 160

CURVA CARATTERISTICA DEGLI ERRORI

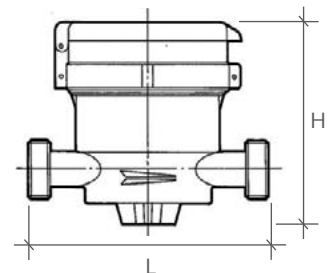


PRESSURE LOSS DIAGRAM

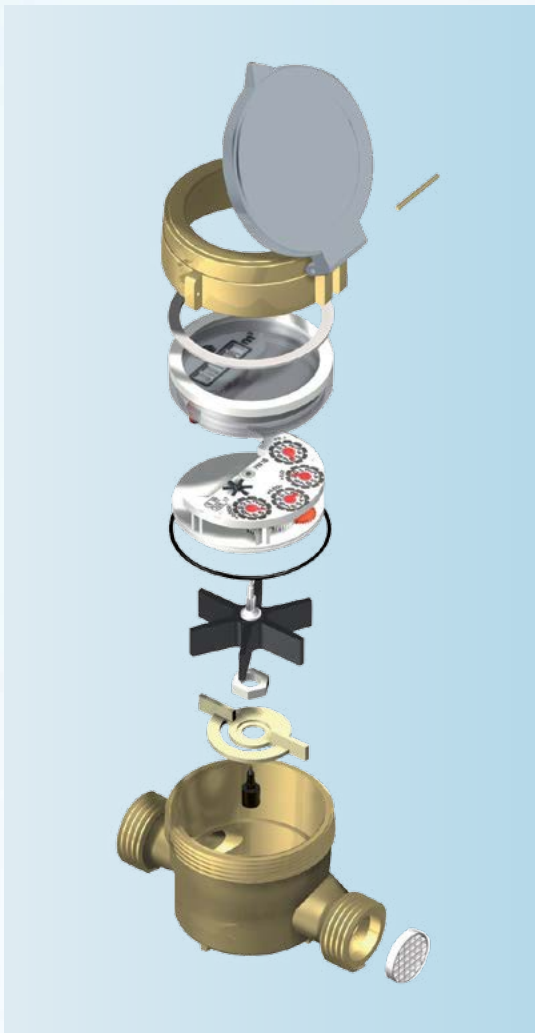


DIMENSIONS

(mm) SIZE (inch)	13/15	20	25	30
L (mm)	110	130	160	160
H (mm)	90	90	128	128
TOTAL LENGTH OF CONNECTORS (mm)	80	100	100	120



Rev. 4/2017 The content of this data sheet is intended to give general information only, we reserve the right to make alterations without prior notification



For additional information and options, do not hesitate to contact us

WATERTECH S.P.A. - Water meters

Factory, commercial main office and administration: Str. Antica Fornace, 2/4 • 14053 Canelli (AT) – Italy
Tel +39 0141 822106-832151 • **Fax** +39 0141 832191-832198 • **Mail** info@wtmeters.it • **Web** www.wtmeters.it