

# WaterTech

COMPANY  
MANAGEMENT SYSTEM  
CERTIFIED BY DNV GL  
= ISO 9001 =  
= ISO 14001 =



## MID MI-001

Irrigation impeller water meter,  
dry dial

DELTA SDOO

# DELTA SDC

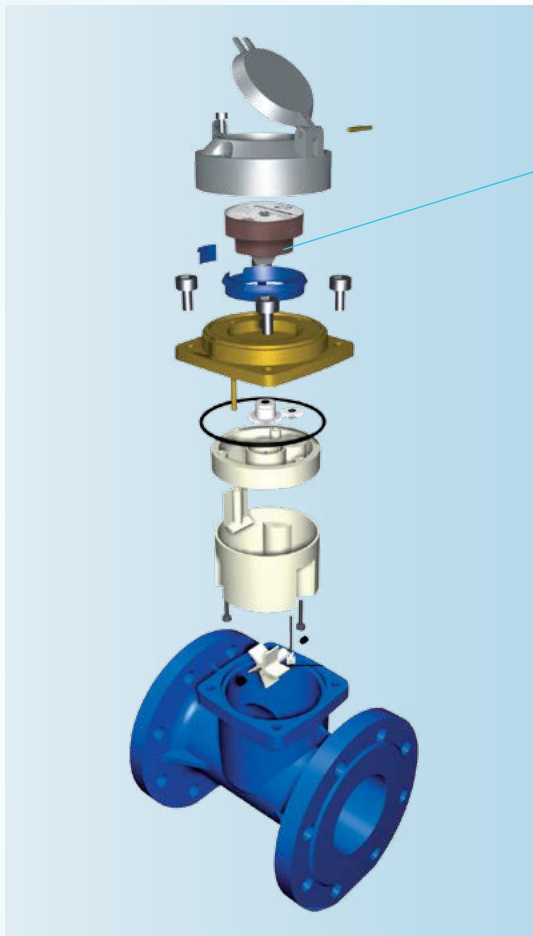
Irrigation impeller water meter, dry dial

## PERFORMANCE ACCORDING TO MID 2014/32/UE DIRECTIVE \* AS AMENDED

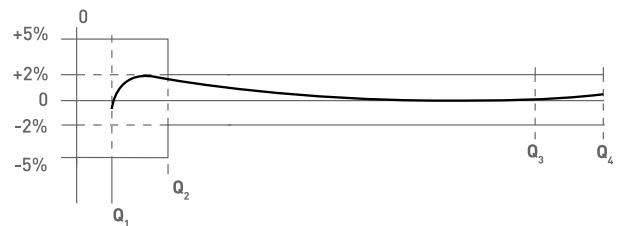
SIZE		PERMANENT FLOW $Q_3$ (m <sup>3</sup> /h)	MAXIMUM FLOW $Q_4$ (m <sup>3</sup> /h)	TRANSITIONAL FLOW $Q_2$ (L/h)	MINIMUM FLOW $Q_1$ (L/h)	WORKING PRESSURE (bar)	MINIMUM READING (L)	MAXIMUM READING (m <sup>3</sup> )	TEMPERATURE CLASS
(mm)	(inch)								
50	2"	63	78,75	2520	1575	16	1	999.999	T30/T50
65	2 1/2"	63	78,75	2520	1575	16	1	999.999	T30/T50
80	3"	100	125,00	4000	2500	16	1	999.999	T30/T50
100	4"	160	200,00	6400	4000	16	1	999.999	T30/T50
125	5"	250	312,50	10000	6250	16	1	999.999	T30/T50
150	6"	400	500,00	16000	10000	16	10	9.999.999	T30/T50
200	8"	630	787,50	25200	15750	16	10	9.999.999	T30/T50
250	10"	1000	1250,00	40000	25000	16	10	9.999.999	T30/T50
300	12"	1600	2000,00	64000	40000	16	10	9.999.999	T30/T50

\* It replaces the MID 2004/22/CE Directive.

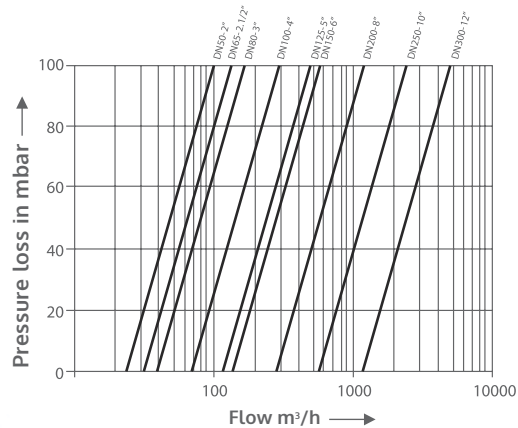
Metrological class MID ( $Q_3/Q_1$ ) R=40



### TYPICAL ERROR CURVE

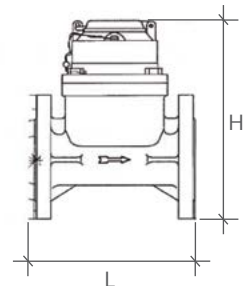


### PRESSURE LOSS DIAGRAM



### DIMENSIONS

(mm) SIZE (inch)	50	65	80	100	125	150	200	250	300
	2"	2 1/2"	3"	4"	5"	6"	8"	10"	12"
L (mm)	200	200	225	250	250	300	350	450	500
H (mm)	260	270	290	300	310	340	395	445	505



Version with metal lid and head available on request

For additional information and options, do not hesitate to contact us

**WATERTECH S.P.A. - Water meters**

Factory, commercial main office and administration: Str. Antica Fornace, 2/4 • 14053 Canelli (AT) – Italy  
**Tel** +39 0141 822106-832151 • **Fax** +39 0141 832191-832198 • **Mail** info@wtmeters.it • **Web** www.wtmeters.it